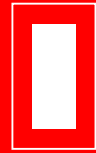
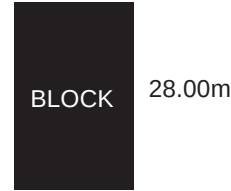
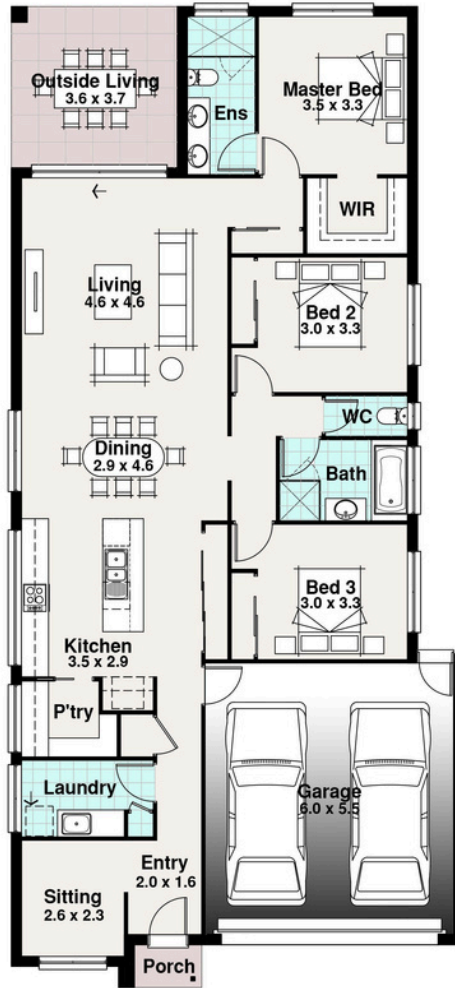




Franklin Facade Pictured



**EXECUTIVE  
RANGE**



12.00m

- 3
- 2
- 2
- 2



### The Teneriffe

The Teneriffe offers a smartly designed 10m wide layout, showcasing a sitting room at the front and the master bedroom at the rear, all within 200m<sup>2</sup>. Despite its modest footprint, it maximizes space efficiency, incorporating plenty of storage and unique features that demonstrate its versatility. With three bedrooms, including a master with ensuite and walk-in robe, it provides comfortable living quarters for families or individuals. The entry sitting room can easily convert to a home office, offering flexibility for remote work or study.

The galley kitchen, living, and dining areas seamlessly open onto the spacious alfresco, creating a seamless indoor-outdoor flow perfect for entertaining or relaxation.

The Teneriffe exemplifies how thoughtful design can make the most of smaller spaces while still offering comfort and functionality.

# The Teneriffe

Width	Length	Residence	144.62m <sup>2</sup>
10.00m	21.70m	Outside	13.10m <sup>2</sup>
		Living Porch	1.42m <sup>2</sup>
		Garage	36.64m <sup>2</sup>
		<b>TOTAL</b>	<b>195.78m<sup>2</sup></b>
			<b>21.07sq</b>