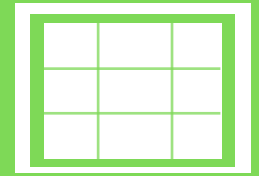
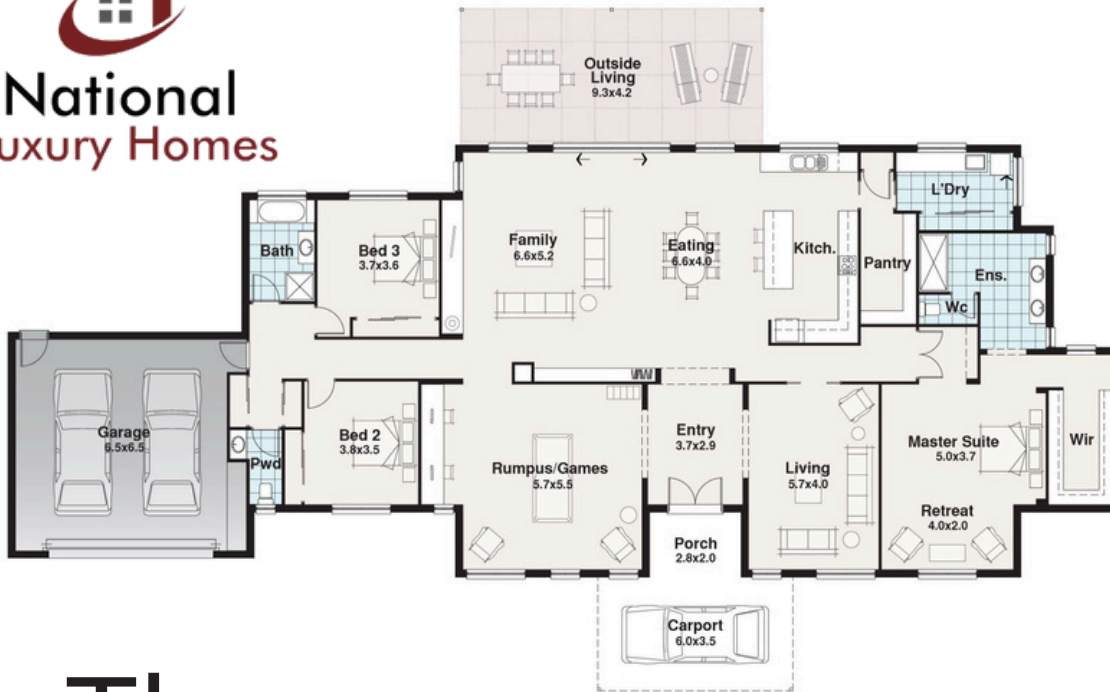




Charlton Facade Pictured



HOMESTEAD RANGE



BLOCK

29.50m

37.00m



3



3



2.5



3

The Rosedale

Width 34.25m
Length 21.02m

Residence	311.18m ²
Porch	5.60m ²
Outside Living	39.13m ²
Carport	21.00m ²
Garage	49.83m ²
TOTAL	426.74m² 45.93sq

The Rosedale

Welcome to the Rosedale, a sanctuary of elegance and comfort nestled within our Homestead Range by National Luxury Homes. With its gracious design and thoughtful layout, the Rosedale invites you to indulge in the ultimate rural lifestyle. Step through the grand entry of the Rosedale and prepare to be enchanted by its spacious and welcoming atmosphere. Boasting three generously sized bedrooms, including a master suite with a parents' retreat, this home offers ample space for relaxation and rejuvenation.

The heart of the Rosedale lies in its open-plan kitchen, dining, and family area—a haven for entertaining and everyday living. For families with teenagers, the Rosedale offers the added bonus of a dedicated retreat or games room. Whether it's a movie night with friends or a quiet space to study, this versatile area provides the perfect escape for young adults to unwind and enjoy.