

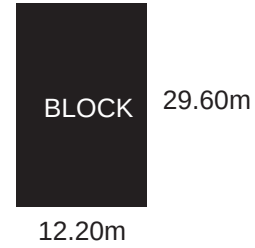
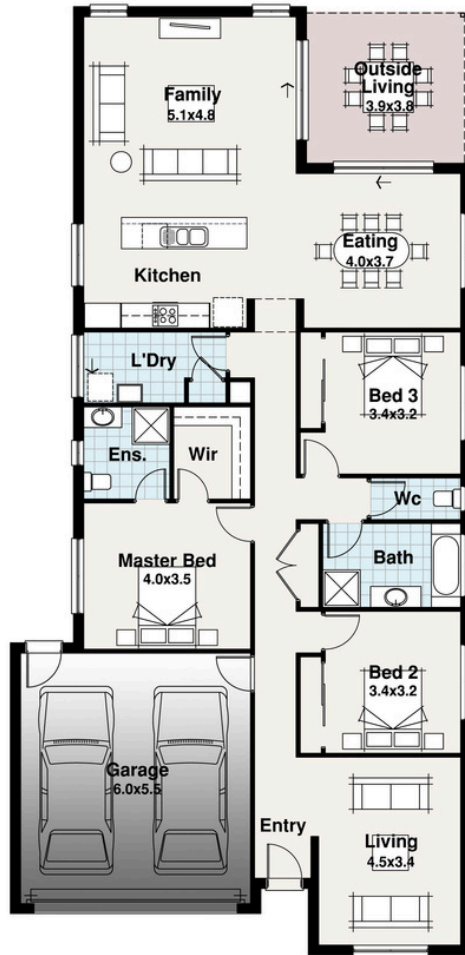






Franklin Facade Pictured



# CARIBBEAN RANGE

## Double Garage



-  3
-  2
-  2
-  2

# The Havana

Width	Length	Residence	167.80m <sup>2</sup>
11.00m	22.69m	Outside Living	14.73m <sup>2</sup>
		Garage	36.26m <sup>2</sup>
		<b>TOTAL</b>	<b>218.79m<sup>2</sup></b>
			<b>23.55sq</b>

## The Havana

The Havana embodies a perfect fusion of space, comfort, and practicality, making it an ideal choice for first-time homebuyers seeking a stylish yet affordable home.

Boasting three spacious bedrooms, including a luxurious master suite complete with a walk-in robe and ensuite bathroom, this home offers a sanctuary of relaxation and privacy for its occupants.

Designed with the needs of the modern homeowner in mind, the Havana offers a great-sized layout that maximizes every square meter of available space. From the welcoming entryway to the open-plan living, dining, and kitchen area, this home exudes a sense of comfort and functionality.

Moreover, the Havana caters to the practical requirements of everyday living, ensuring that first-time homeowners have everything they need to start their journey on the right foot.

