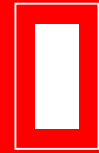
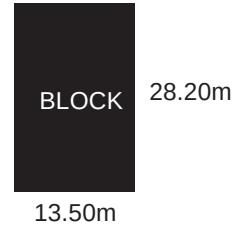
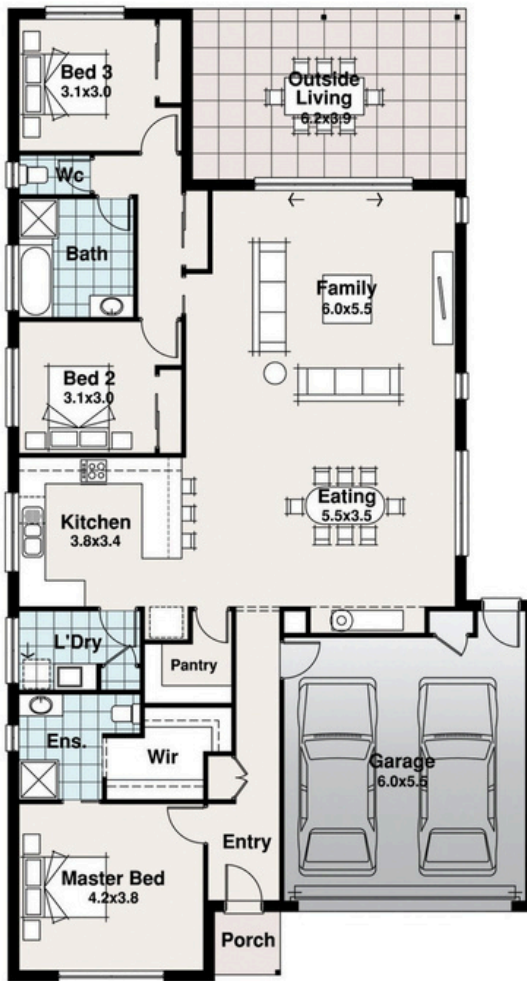




Penola 2 Facade Pictured



EXECUTIVE
RANGE



- 3
- 2
- 2
- 1



The Grantville

The Grantville offers spacious living with three bedrooms, including a master suite featuring an ensuite and walk-in robe for added convenience and comfort.

Its central kitchen, complete with a large walk-in pantry, overlooks a roomy family and dining area, seamlessly connecting indoor and outdoor spaces with a large alfresco area.

This design promotes effortless entertaining and relaxation, ideal for family gatherings or quiet evenings outdoors.

With a garage spacious enough for two family cars and a store cupboard, the Grantville ensures practicality and ample storage solutions.

Its thoughtful layout and emphasis on spacious living make it a perfect choice for families or individuals seeking a comfortable and functional home environment.

The Grantville

Width	Length	Residence	170.36m ²
12.00m	22.10m	Outdoor Living	24.19m ²
		Porch	2.16m ²
		Garage	37.60m ²
		TOTAL	234.31m²
			25.22sq