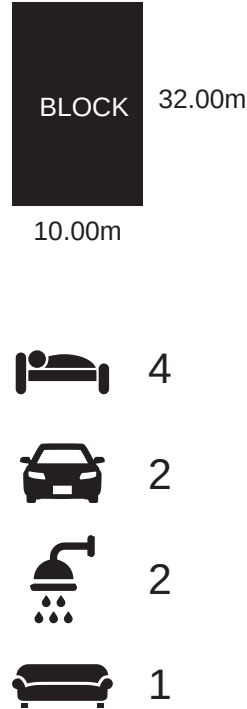
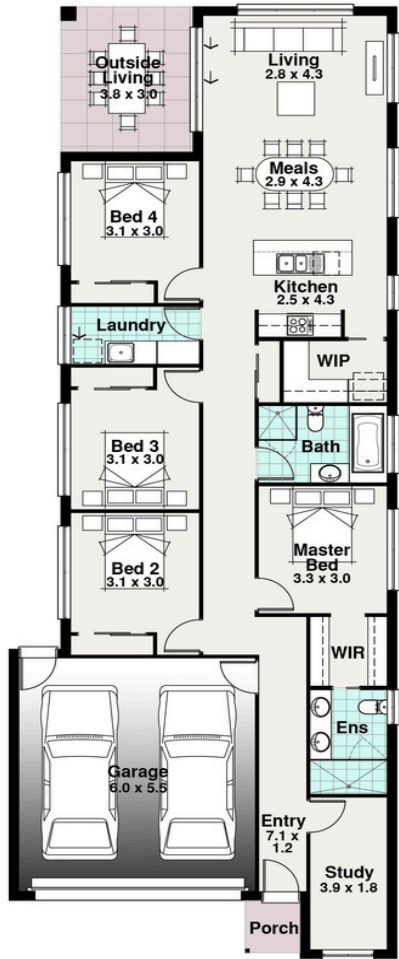




Coolum Facade Pictured



CARIBBEAN RANGE Double Garage



The Calamvale

Width	Length	Residence	142.52m ²
9.00m	24.54m	Porch	1.73m ²
		Garage	39.81m ²
		Outside Living	11.51m ²
		TOTAL	192.57m²
			20.72sq

The Calamvale

The Calamvale epitomizes the concept of compact living. Offering a stylish and functional solution for modern homeowners looking to maximize space without sacrificing comfort. Designed to fit neatly onto 10-meter-wide blocks of land, this home proves that size is no barrier to luxurious living.

Featuring four bedrooms and two bathrooms, the Calamvale ensures ample accommodation for families or those who love to entertain guests.

At the heart of the Calamvale lies its open-plan galley kitchen, a culinary haven where form meets function. Equipped with modern appliances and ample storage, this kitchen is designed to inspire culinary creativity while also offering practical solutions for everyday meal preparation. The inclusion of a walk-in pantry further enhances the functionality of the space, ensuring that ingredients and supplies are easily accessible and organized.

