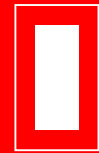
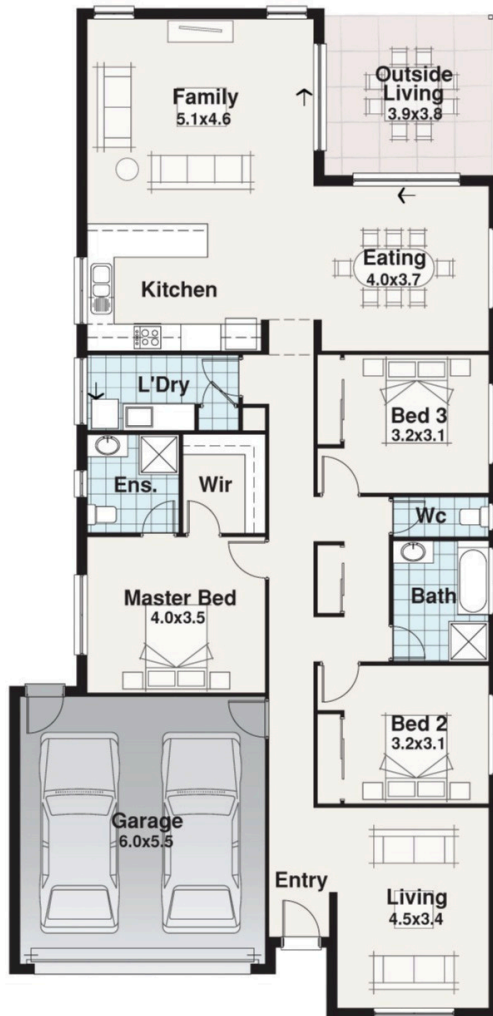




Tathra Facade Pictured



EXECUTIVE
RANGE



BLOCK 29.70m

12.20m



The Boneo

Width 11.00m
Length 22.69m

Residence	167.80 m ²
Outdoor Living	14.73 m ²
Garage	36.26 m ²
TOTAL	218.79 m²
	23.55 sq

The Boneo

The Boneo, a compact version of the Bass, maximizes space while still offering three spacious bedrooms and two bathrooms.

Its open-plan kitchen, living, and dining space at the rear create a seamless flow, extending to the alfresco area for outdoor enjoyment.

Meanwhile, the separate living area at the front serves a dual purpose, providing flexibility as a media room or second living space.

Despite its smaller footprint, the Boneo retains the practicality and style of its larger counterpart, making it an ideal choice for those seeking a comfortable and versatile living environment without compromising on functionality..